



Dual Anchor Adjuster/Spreader

INNOVATIVE DESIGNS FROM RACINE RAILROAD PRODUCTS



RRP Design

The Dual Anchor Adjuster Spreader is a fully enclosed cab machine able to work both rails simultaneously or independently.

With a tooling change and a change of the module control screen, the Dual Anchor Adjuster Squeezer can either squeeze anchors or spread anchors (tie in or tie out with plate).

Innovative Technology

- Programmable MD4 controlled automation has faster & smoother cycle times than previous RRP machines.
- Onboard electrical system diagnostics that simplify troubleshooting and lessen downtime.
- Remote program updates and remote troubleshooting with built-in telematics available.

Easy Set-up and Operation

- Easy touchscreen controls for workhead adjustments are made inside the cab from the operator seat, saving time while keeping the operator in a safe environment.
- Auto and Manual operation modes.
- Reliable workhead design provides years of trouble-free service.

Versatile

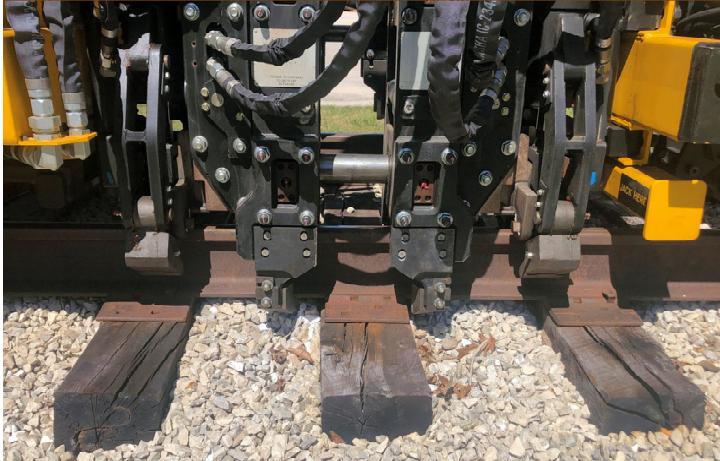
- Simple in-cab adjustments align the workhead to accommodate rail height.
- Easy access to optional tools ensures a quick changeout for either 5", 5 1/2", or 6" rails on all anchor types throughout the head's 15" range.
- Squeeze two anchors on one rail or four anchors on two rails or spread two anchors on one rail or four anchors on two rails.
- Uniformly positioning anchors against tie or tie plates without twisting.

Video of the Dual Anchor Adjuster/Spreader: <https://youtu.be/KkxsBrocmGE>



Dual Anchor Adjuster/Spreader

INNOVATIVE DESIGNS FROM RACINE RAILROAD PRODUCTS

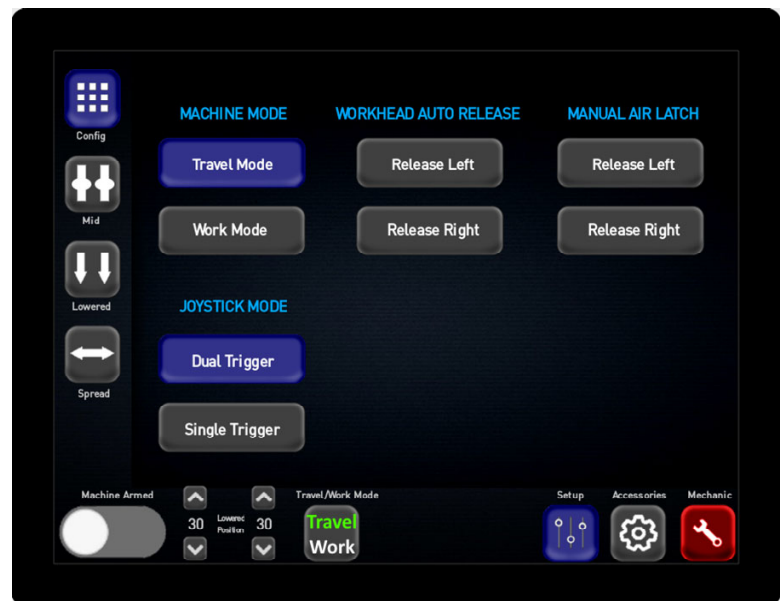


Specifications

- Dimensions: 22'9" L x 8'6" W x 10'8" H
- Weight: 24,00 lbs
- Travel Speed: 25 MPH
- Engine: We offer a variety of engine packages to choose from, No DEF
- Fuel Capacity: 50 Gallons
- Hydraulic Reservoir: 58 Gallons (Case Drain Filter, Pressure Filter, & Return Filter options available)
- 24 volt system with circuit breakers for lights & accessories
- Seating Capacity: 1 operator & two passengers

Features

- Excellent visibility of the work zone, increasing productivity and reducing wear on machine travel components.
- Machine has un-obstructed operator visibility fore and aft when track traveling.
- Cab: enclosed heat & A/C, full ergonomic seat with joystick controls, tinted safety glass & pull-down roller shades for operator comfort.
- Various HVAC options to choose from.
- Multiple storage options for tools & equipment.
- Two joystick controls to control each side of the workhead independently.
- Center H-Frame turntable that sets on the rails to manually rotate the machine as needed.
- Easy accessibility to workhead components to perform routine maintenance.



Operator Touchscreen Control Panel for Workhead Adjustment and Diagnostic Troubleshooting

For a complete list of specifications and machine options available, contact Racine Railroad Products, Inc. at:
Tel (262) 637-9681 / email: custserv@racinerailroad.com
1955 Norwood Court Mount Pleasant, Wisconsin 53403

